

Shanghai 2026 Sinoexpo

Informa Markets International
Exhibition Co., Ltd.

Be The Best



Climbing Everest
Our resolve is iron-strong

(Surmounting that mountain)

Achieving our goals
We proceed with careful consideration

01

Company Introduction



Be The Best

The Origin of IM Sinoexpo

Shanghai Sinoexpo Informa Markets International Exhibition Co., Ltd., (IM Sinoexpo) established in 1998 in Shanghai Waigaoqiao Free Trade Zone, is China's first joint venture exhibition company between Shanghai Sinoexpo International Exhibition Ltd and UBM Asia (now Informa Plc.),

Online-to-Offline Integration

The total rented area of 70+ exhibitions by IM Sinoexpo reached 1,836,000 sq.m., creating multiple trade opportunities for 1.414 million buyers worldwide. The online business platforms starting from 2006 include 16 B2B portals with English & Chinese versions, 7 sourcing mini-programs and 3 apps. In 2025, IM Sinoexpo reaches the era of Digital 5.0, to develop our new quality productivity and achieve sustainable development.

**28 years pursuing excellence,
A leading exhibition company in China,
driven by integrated online and offline strategies,
thriving in the digital intelligence era.**

70+

Annual Exhibitions

1.886^{Million}

Total rented exhibition space in sq.m. +2.58% YOY

20,521

Domestic Exhibitors +11.95% YOY%

1.414^{Million}

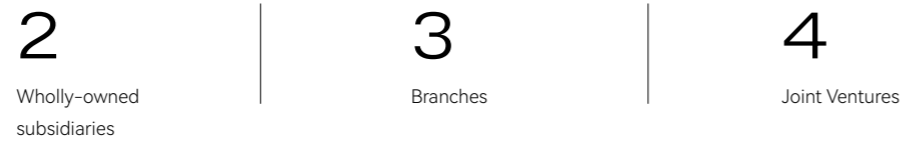
Visitors +7.88% YOY

02

Structure

Organizational Structure

Headquartered in Shanghai, the company operates multiple wholly-owned subsidiaries, branch offices, and joint ventures across Guangzhou, Beijing, Shenzhen, Guzhen in Zhongshan, Zhengzhou, and other locations. This network drives localized business development, supports our BD innovation growth roadmap, and delivers integrated online-offline solutions.



Informa PLC (LSE: INF), a FTSE 100 Index constituent, is a multinational B2B exhibitions, academic publishing, and business intelligence group based in London, United Kingdom. STAX has consistently recognized Informa as the global leader in the exhibition industry by group revenue for several years running.

The group operates through five divisions: Informa Markets (live and on-demand events, digital services); Informa Connect (content-led live and on-demand events, specialist content); Informa Festivals (experience-led events); Informa TechTarget (B2B digital services); and Taylor & Francis (a world-leading publisher of academic research, advanced learning, and open research).



Corporate Headquarter

7-8/F, Urban Development International Tower, NO. 355, Hongqiao Road, Shanghai 200030, China
T: +86-21-3339 2222/6437 1178
E: info@imsinoexpo.com

Subsidiaries / Branch Offices

SHANGHAI

Shanghai IM Sinoexpo Digital Services Co., Ltd

7-8/F, Urban Development International Tower, NO. 355, Hongqiao Road, Shanghai 200030, China
T: +86-21-3339 2222/6437 1178
E: info@imsinoexpo.com

China International Exhibitions Ltd.

7-8/F, Urban Development International Tower, NO. 355, Hongqiao Road, Shanghai 200030, China
T: +86-21-3339 2222/6437 1178
E: info@imsinoexpo.com

GUANGZHOU

Guangzhou Branch Office

Rm.2804-2810, Building E, Poly World Trade Center, No.1022 Xingang East Road, Guangzhou, Guangdong 510305, China
T: +86-20-8667-9383
E: helen.dong@imsinoexpo.com

BEIJING

Beijing Branch Office

1206, Building C, No.5 Baiziyuan, No. 16, Bai Zi Wan Road, Chaoyang District, Beijing 100124, China
T: +86-10-8754-6868
E: minhua.chi@imsinoexpo.com

SHENZHEN

Shenzhen Sinoexpo Informa Markets International Exhibition Co., Ltd.

3509 Unit, HOP International Center, Bao'an District No.24 Haixiu Road Shenzhen, Guangdong Province
E: Bess.Lin@imsinoexpo.com

Joint Ventures

ZHONGSHAN

Guzhen Lighting Expo Co., Ltd.

2/F, Guzhen Convention and Exhibition Center, Guzhen Town, Zhongshan, Guangdong, 528421, China
T: + 86-760-2235-3188
E: GuzhenLightingFair@informa.com

GUANGZHOU

Guangzhou Sinobake International Exhibition Co., Ltd.

Rm.2807, Building E, Poly World Trade Center, No.1022 Xingang East Road, Guangzhou, Guangdong 510305, China
T: +86-10-65801456
E: lei.luo@imsinoexpo.com

SHANGHAI

MCW (Shanghai) Expo Co., Ltd.

23/F, T1, NO. 1416 Daduhe Road, T Center Shanghai
T: +86-18516628222

ZHENGZHOU

Zhengzhou Bohua Frozen Cube Exhibition Co., Ltd.

Rm 1414, 14/F, Kelly International Center, 50 Shoufeng St., Zhengdong, Zhengzhou, Henan
T: + 86- 13838248820

03

Staff Composition

A Young Workforce

With a total of 600 employees and an average age of 34, the company's workforce comprises over 61% of employees born in the 1990s and 2000s. Nearly 70% of our staff hold bachelor's or master's degrees. Our professional team is youthful, energetic, and possesses both international vision and digital thinking. They are bold in challenging conventions and eager to explore innovative models and approaches. This new generation serves as the primary driver of our growth, infusing the organization with dynamic energy.

600

Total Workforce

34

Avg. Age

69.8%

Bachelor's degree and above

61%

Millennial & Gen Z percentage

04

Digital Intelligence Ecosystem



10

Mini-Programs /APP



16

B2B Portals(CN&EN)



5.27 Million

Annual PVs +20.0% YOY



115,683

Inquiries +26.9% YOY



124 Million

SPU +8.5% YOY



5,599

Business Match-making +40.0% YOY

Digital Ecosystem

We integrate our branded trade shows, events, and competitions with self-operated B2B online portals and e-commerce platforms, mini-programs, and new media & video channel matrix. Leveraging intelligent data marketing platforms and AI-generative technologies as advanced productivity tools, the company continuously evolves to create an integrated online-offline synergistic development model. It serves multiple vertical sectors including food & beverage, hospitality & commercial properties, cleaning, lighting, boat & tourism, lifestyle, furniture and decoration, pharmaceuticals and food processing & packaging, delivering enhanced exhibition experiences for professional buyers and exhibitors.

Integrating Advanced Productivity Forces
Comprehensively Empower Development

Shaping a New Ecosystem

Centered on the B2B model and deeply cultivating the B2P (Business-to-Professional) domain, IM Sinoexpo precisely connects supply and demand through our B2B portals, conducts factory-direct sales via our mini-programs and integrates a matrix of nearly 100 new social media accounts (WeChat, Douyin, Weibo, Rednote, Bilibili and Zhihu), while coordinating with prestigious competitions, events, conferences, forums, live courses, and procurement communities. This creates a powerful aggregation effect, establishing a comprehensive ecosystem that delivers digital empowerment.

97

New social media accounts
(Wechat, Rednote, Douyin)

43.97 Million

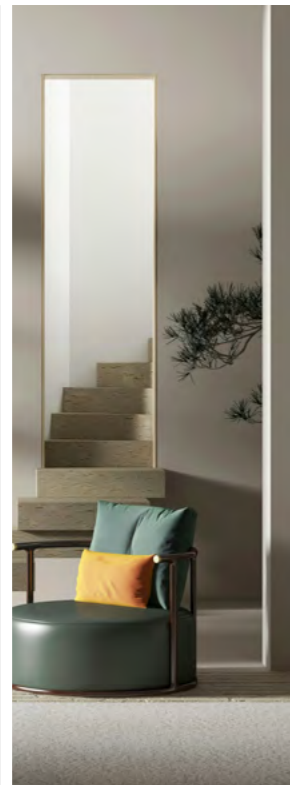
Total Readership + 76.5% YOY

Intelligent Synergy

Leveraging intelligent platforms such as electronic contracts, Salesforce, IIRIS, EMS, WeCom, MyTalent, and Sinoexpo Link, the company consolidates professional talent resources across online and offline channels to provide precisely tailored services to clients and industry partners with enhanced intelligence and efficiency.



Catering, Food, Bakery, Hospitality, Franchise



Furniture & Design



Commercial Properties, Engineering, Cleaning



Lighting



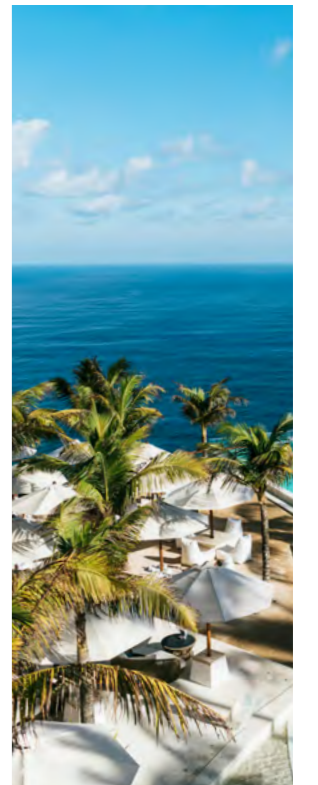
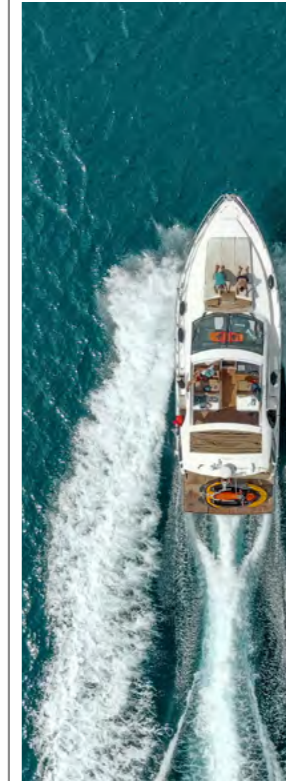
Pharmaceuticals



Nutraceutical Products, Food Ingredients, Processing & Packaging



Boat & Lifestyle



Tourism

05

Brand Exhibitions

From China to the World

The 28-year-history IM Sinoexpo organises more than 70 trade exhibitions every year, covering a total area of 1.838 million square metres in Shanghai, Guangzhou, Shenzhen, Chengdu, Zhongshan and other 1st & 2nd tier cities in China and overseas countries such as Thailand, Indonesia and Malaysia. Our Exhibitions cover industries including Catering, Food, Hospitality, Commercial Properties, Furniture & Design, Lighting, Pharmaceuticals, Processing and Packaging, Boat, Lifestyle and Tourism. The annual visitor attendance reaching 1.414 million.

Industry-Wide Recognition

Branded exhibitions in Shanghai 2024

- HOTELEX SHANGHAI
- FURNITURE CHINA

BEST+ Exhibitions in Shenzhen 2023-2025
One of the most Influential exhibitions and industry Events Worldwide

- CONNEXION SHENZHEN

Outstanding Shanghai Exhibitions 2024

- FHC
- CPHI CHINA
- PROPAK CHINA
- HSP SHANGHAI
- PMEC CHINA

06

Online Platforms

Digital Intelligence 5.0

We fully entered the Digital 5.0 era in 2025, featuring platform intelligence and management intelligence. Through integrated collaboration to reduce costs and enhance efficiency, and with a focus on intelligent solutions, the company has established a new technological infrastructure enabling full interconnectivity across all systems. This achieves data interoperability and reconstructs the online platform "Digital Chain for All Industries, Cloud Exhibitions for All," operating alongside offline exhibitions, competitions, and events. The integrated online-offline approach promotes an innovative ecosystem fostering collaborative development between the lifestyle and health industries, progressively realizing the transformation from "exhibition internet" to "industrial internet" in a new narrative.

New Productivity & Growth

Our Digital Intelligence 5.0 online platform leverages AI-powered new productive forces and full interconnectivity to achieve intelligentization. Focused on enhancing exhibitions, engaging audiences, and optimizing delivery, it serves 20,000 mid-to-high-end suppliers across eight industries and nearly 5 million professional buyers (B2B, professional, and consumer). The platform delivers industrial internet solutions with advanced business models, comprehensive marketing services, and extensive industry data, facilitating industrial chain transactions and creating unlimited business opportunities.

20,000

Mid-to-high-end Suppliers

5

 Million

Qualified Buyers

B2B Mobile Platforms

Dedicated B2B Websites

Seven industry-specific mini-programs provide precision matching services and omnichannel marketing platforms, empowering businesses to achieve growth in the digital era. Three B2B apps spanning pharmaceuticals, F&B and hospitality, and furniture sectors make connecting with overseas markets more convenient.

16 B2B Portals covering 8 industries with Chinese and English Separate Versions.

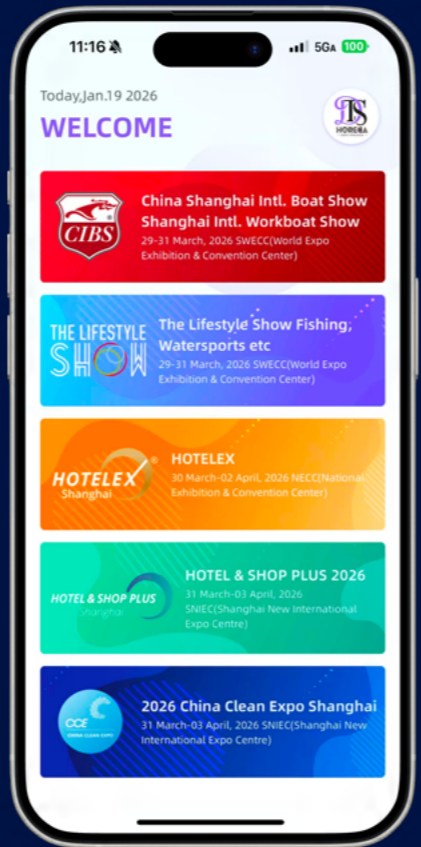
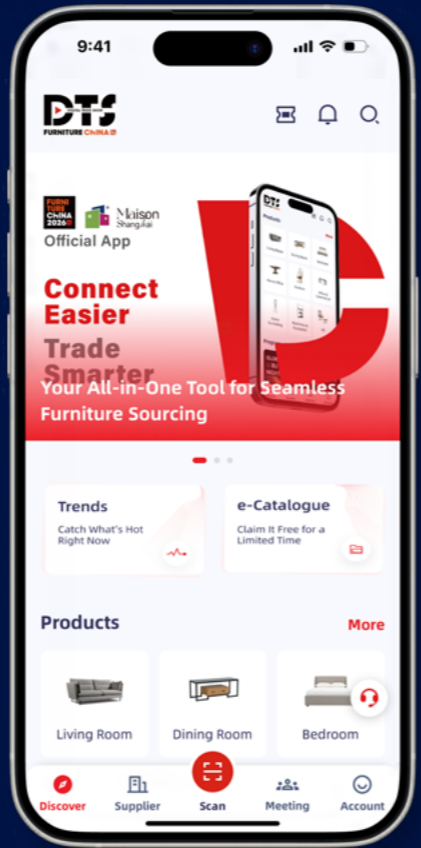
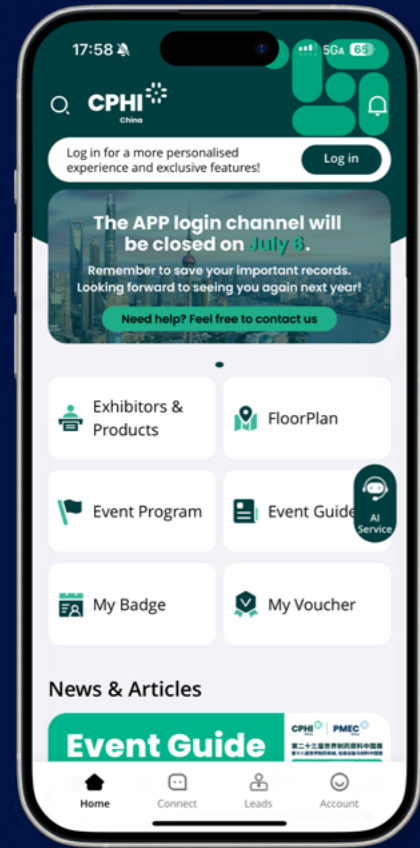


DTS English-Language Dedicated Website: a specialized overseas service website exclusively in English for Furniture China, enabling international buyers and suppliers to connect effortlessly and making procurement fast and efficient.

Sinoexpo Link: Exhibition Resource Hub

"Sinoexpo Link" Mini-Program: -The company's comprehensive exhibition resource platform (upgraded from the original booth contractor service platform) digitally integrates booth construction, logistics, business travel, and insurance to simplify exhibition participation for exhibitors. The platform features over 80 qualified, reputable booth contractors, enabling worry-free exhibition experiences.





07 Cloud Exhibition & E-commerce

Digital Growth Engine

The Platform brings together the best of our offline exhibition ecosystem and digital business. Through an intuitive mini-program featuring three powerful channels—Cloud Exhibition, E-commerce, and Headlines—we aggregate the industry's hottest content: news, events, live streams, exhibitions, and purchase opportunities. Connecting buyers and suppliers with comprehensive marketing and transaction services, we're building the future of private domain engagement, exhibition empowerment, and online revenue growth.

7 Mini-Programs | 3 Mobile APPs



08 Activities & Competitions

World-Class Brilliance

Diverse and dynamic competitions, conferences and forums, gala dinners, award ceremonies, business matchmakings, themed showcases, and other activities have always been key highlights presented by IM Sinoexpo to deliver exceptional experiences across various industries. These events have become indispensable industry gatherings and constitute one of the company's core competitive advantages.

Core Competitiveness

428 conferences & 137 competitions and themed events were held throughout 2025. These events played an active role in bringing together resources, effectively promoting industry exchange and interaction, spotlighting stars, nurturing talent, sharing knowledge, facilitating trade connections, driving innovation, and recognizing achievements within the industry.

428

Conferences and Forums

137

Themed Events

565+

Activities and Competitions

Maison Shanghai 2025
Elemental Evolution Theory
- Genetic Reconstruction of Future Luxury Residences



Maison Shanghai 2025
Summit Forum



The 23rd CPHI China
The 5th Pharmaceutical Innovation Industry Annual Conference



The 28th Shanghai Global Food Trade Show (FHC)
The 26th FHC China International Culinary Arts Competition



Maison Shanghai 2025
Award Ceremony



Catering | Food | Bakery | Hospitality | Franchise



2026 Shanghai International Hospitality
Equipment & Foodservice Expo

www.hotelex.cn/shanghai

2026.3.30-4.2 | NECC (Shanghai)



2026 Guangzhou International Hospitality
Equipment & Foodservice Expo

www.hotelex.cn/guangzhou

2026.5.11-13 | Canton Fair Complex



HOTELEX Chengdu 2026

www.hotelex.cn/chengdu

2026.7.2-4 | CCNICEC (Chengdu)



HOTELEX Shenzhen 2026

www.hotelex.cn/shenzhen

2026.10.13-15 | Shenzhen World (Bao'an)



HOTELEX SHANGHAI
COFFEE FESTIVAL
HOTELEX 上海国际咖啡文化节

www.hotelex.cn

2026.3.30-4.2 | NECC (Shanghai)



Concurrent Event:



Expo Finefood Shanghai 2026



Shanghai International Coffee & Tea Exhibition 2026

Concurrent Event:



HOTELEX Chengdu Coffee & Food Festival

Concurrent Event:



HOTELEX Shenzhen Coffee & Food Festival

Catering | Food | Bakery | Hospitality | Franchise



Food Plus 2026

2026.5.11-13 | Canton Fair Complex

SFE International Franchise Exhibition

www.sfeshow.com

The 29th Shanghai Global Food Trade Show

www.fhcchina.com

2026.11.10-12 | SNIEC Shanghai

HOTELEX Vietnam

2026.3.24-26 | Ho Chi Ming City, Vietnam

HOTELEX Indonesia

2026.7.21-24 | Jakarta, Indonesia

HOTELEX Thailand

2026.8.19-22 | Bangkok, Thailand



Concurrent Event:



The 29th China Bakery Exhibition
www.baking-cn.com



The 8th Guangzhou International Franchise Exhibition
www.jmgle.com

系列展会:



The 41st Shanghai International Franchise Exhibition
2026.3.30-4.2 | NECC (Shanghai)



The 8th Chengdu International Franchise Exhibition
2026.7.2-4 | CCNCEC (Chengdu)



Zhengzhou International Franchise Exhibition
2026.8.8-10 | ZZICEC (Zhengzhou)



The 42nd Shanghai International Franchise Exhibition
2026.11.10-12 | SNIEC Shanghai

Concurrent Event:



ProWine Shanghai
www.fhcchina.com/home/co-locate/prowine-shanghai



Salon du Chocolat
www.salonduchocolat.cn



Shanghai International Canned Food and Raw Materials, Machinery and Equipment Expo 2026
cmf.fhcchina.com



Global Geographical Indication & Regional Brand Agriculture Products Expo 2026
www.agrale.com

ASIAFRESH

2026 China (Shanghai) International Fruit and Vegetable Trade Fair
www.asiafreshexpo.cn

Overseas Participation



FHV 2026
2026.3.24-26
Ho Chi Ming City, Vietnam



FHA 2026
2026.4.21-24
Singapore



ProWine Singapore
2026.4.21-24
Singapore



FHTB 2026
2026.4.28-30
Bali, Indonesia



SFH 2026
2026.6.9-12
Seoul, Korea



FHI 2026
2026.7.21-24
Jakarta, Indonesia



FHT 2026
2026.8.19-22
Bangkok, Thailand



FOODTEC Cambodia 2026
2026.9.28-30
Phnom Penh, Cambodia

Commercial Properties | Engineering | Cleaning



Hotel & Shop Plus Shanghai 2026
www.expohsp.com
2026.3.31-4.3 | SNIIEC Shanghai



27th China Clean Expo
www.chinacleanexpo.com
2026.3.31-4.3 | SNIIEC Shanghai



SHOP PLUS Shanghai
www.shopplusevent.com
2026.3.31-4.3 | SNIIEC Shanghai



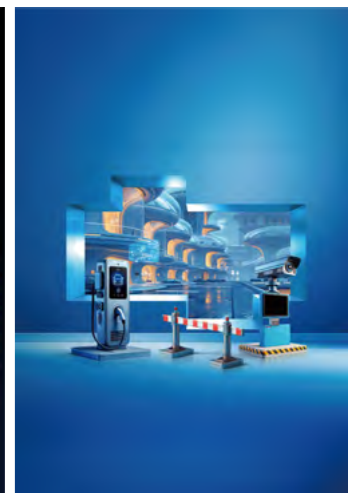
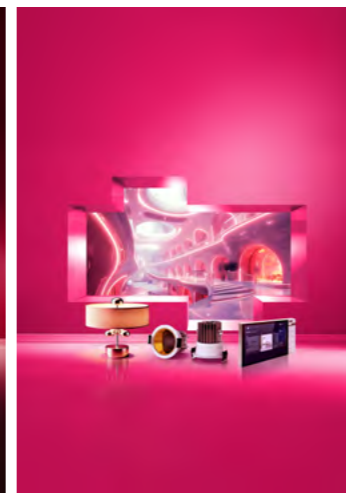
2026 Expo Lighting for Commercial Properties
www.hdeexpo.com/expolighting
2026.3.31-4.3 | SNIIEC Shanghai



Shanghai International Architecture Festival
www.siafevent.com
2026.3.31-4.3 | SNIIEC Shanghai



Expo for International Facility Management
www.chinacleanexpo.com/cfme
2026.3.31-4.3 | SNIIEC Shanghai



Concurrent Event:



Expo Build China



2026 Shanghai International Hospitality Design and Supplies Expo
www.hdeexpo.com



2026 Shanghai International Hotel Investment & Franchise Expo
www.hdeexpo.com/HIFE



2026 Shanghai International Future Office Fair
www.expohsp.com/office



2026 Shanghai International Intelligent Sun Shading & Energy-Efficient Building Exhibition
www.isse-expo.com



2026 Shanghai International Public Space Landscape Engineering Design Exhibition
www.pslleexpo.com

Concurrent Event:



China LaundryTech Show
www.chinacleanexpo.com/cls



Expo for Shanghai International Indoor Air Purification
www.chinacleanexpo.com/cieq



Expo for International Environmental Sanitation & Public Facility
www.chinacleanexpo.com/ices

Concurrent Event:



2026 Shanghai International Store Design and Operation Expo
www.shopplusevent.com/exhibition/store-design-and-operation-expo



2026 Shanghai International Exhibition on Self-service Products and Vending System
www.shopplusevent.com/exhibition/cvs

Commercial Properties | Engineering | Cleaning



Hotel & Shop Plus Chengdu

www.shopplusevent.com
2026.7.2-4 | CCNICEC (Chengdu)



CCE Chengdu

www.hdeexpo.com/expolighting
2026.7.2-4 | CCNICEC (Chengdu)



Hotel & Shop Plus Shenzhen

www.shopplusevent.com
2026.10.13-15
Shenzhen World (Bao'an)



CCE Shenzhen

www.chinacleanexpo.com/cfme
2026.10.13-15
Shenzhen World (Bao'an)



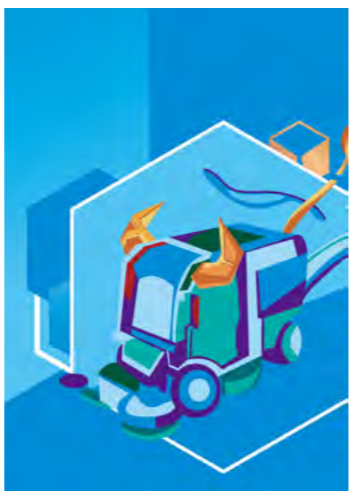
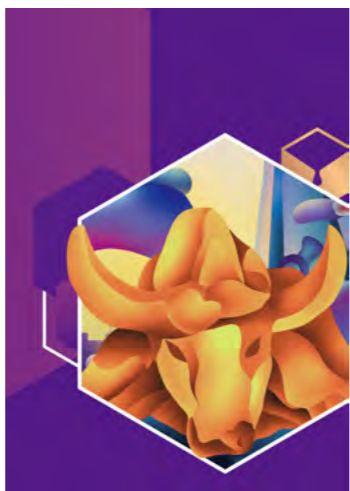
2026 Hotel & Shop Design and Supply Asia

www.hdeexpo.com/2026-hsp-indonesia-expo
2026.7.21-24 | JIExpo, Indonesia



Hotel & Shop Plus Thailand

www.expohsp.com/thailand
2026.8.19-22 | QSNCC, Thailand



ISSA Global Shows:



ISSA SHOW ASIA 2026
2026.9.16-18
COEX Magok, Korea



ISSA Cleaning & Hygiene Expo
2026.10.8-9
MCEC, Australia



ISSA SHOW NORTH AMERICA
Education: 2026.11.16-19
Exhibits: 2026.11.17-19
Mandalay Bay Convention Center, USA



ISSA PULIRE
2027.5.11-13
Fieramilano Rho, Italy

Lighting



2026 China (Guzhen) International Lighting Fair

www.jiagle.com/dengshi_dengbohui

Spring Edition: 2026.3.18-21
Summer Edition: 2026.5.26-28
Autumn Edition: 2026.10.22-25
Guzhen Convention and Exhibition Center, Guangdong



Concurrent Event (Spring Edition/Summer Edition) :



Guzhen Lighting Manufacturing, Supply and Service Expo
www.jiagle.com/dengshi_dengbohui

Boat | Lifestyle | Tourism



TOURISM PLUS SHANGHAI 上海旅游产业博览会

Tourism Plus Shanghai
www.lbhgle.com/tie
2026.3.29-31
SWECC Shanghai

The 29th China Shanghai International Boat Show Shanghai International Workboat Show

www.boatshowchina.com
2026.3.29-31
SWECC Shanghai



The Lifestyle Show
www.expolifestyle.com
2026.3.29-31
SWECC Shanghai



Urban Style
www.expolifestyle.com/urban
2026.10.13-15
Shenzhen World



Concurrent Event:



MCW Expo
www.mcwzg.com

Concurrent Event:



2026 Shanghai International Lure Fishing Show
www.expolifestyle.com/lure



2026 Shanghai International Water Sports Show
www.expolifestyle.com/watersports



2026 Shanghai International Outdoor Sports and Sporting Goods Show
www.expolifestyle.com/outdoor



Shanghai International Fishing Show Premium 2026
www.expolifestyle.com/fsp

Pharmaceuticals



CPHI China 2026
www.cphi.com/china

2026.6.16-18 | SNIEC Shanghai



PMEC China 2026
www.pmecchina.com/en

2026.6.16-18 | SNIEC Shanghai



CPHI & PMEC Shenzhen
www.cphi.com/china/en-gb/home.htm

2026.9.16-18 | Shenzhen Convention & Exhibition Center



Standalone Conference

CPHI China 2026 世界制药原料中国展

2026.6.16-18 | SNIEC Shanghai



- Pharma Ingredients
- Natural Supply
- Pharma Excipients
- Biotech
- Contract Services
- Finished Dosage

PMEC China 2026 世界制药机械、包装设备与材料中国展

2026.6.16-18 | SNIEC Shanghai



- Pharma Machinery
- Packaging & Drug Delivery
- Laboratory Instruments & Equipment
- Bioengineering
- Clean Technology
- Environmental Protection
- Life Science Instruments

Concurrent Event:

ICSE China 2026

NEX China 2026

Life Science, Bio Pharma and Biotech 2026

Concurrent Event:

InnoPack China 2026

LABWorld China 2026

CPHI & PMEC Shenzhen 制药工业展(深圳)

2026.9.16-18 | Shenzhen Convention & Exhibition Center



- Pharma Ingredients
- Pharma Excipients
- Biotech
- AI Tech & Contract Service
- Finished Dosage
- Natural Supply
- Beauty & Cosmetics Supply Chain
- Pharma Machinery & Packaging Machinery
- Packaging & Drug Delivery
- Laboratory Instruments & Equipment
- Clean Technology
- Smart Manufacturing

Concurrent Event:

CPHI Shenzhen 2026 Pharmaceutical Quality Development Conference

CPHI China Standalone Conference

2026. Apr. May & Oct. | Shanghai China



- 2026 Biomedicine Innovation and Industry Conference
- 2026 Synthetic Biology Manufacturing Innovation and Development Conference
- 2026 Pharmaceutical Innovation Industry Conference

2026 Biomedicine Innovation and Industry Conference

2026.4.23-24
Aloft Shanghai Zhangjiang Haike, Shanghai

2026 Synthetic Biology Manufacturing Innovation and Development Conference

2026.5.21-22
Sheraton Grand Shanghai Pudong Hotel, Shanghai

2026 Pharmaceutical Innovation Industry Conference

2026.10
Shanghai

Nutraceutical Products | Food Ingredients Processing & Packaging



PROPAK China & FOODPACK China

www.propakchina.com/en

2026.6.15-17 | NECC (Shanghai)



Hi & Fi Asia China

www.figlobal.com/china/en/home.html

2026.6.15-17 | NECC (Shanghai)



Healthplex Expo 2026
Natural & Nutraceutical Products China 2026

www.hncexpo.com/en

2026.6.15-17 | NECC (Shanghai)



PROPAK Shenzhen

www.propakchina.com/en/shenzhen

2026.10.13-15 | Shenzhen World (Bao'an)



Hi & Fi Shenzhen

www.fia-china.com/shenzhen

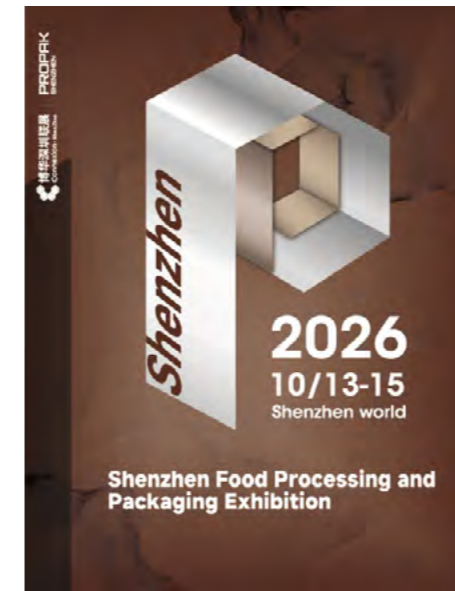
2026.10.13-15 | Shenzhen World (Bao'an)



Healthplex Expo 2026
Natural & Nutraceutical Products Shenzhen 2026

www.hncexpo.com/en/sz

2026.10.13-15 | Shenzhen World (Bao'an)



Concurrent Event:



Starch Expo
www.cisie.cn/en/



Asia Organic Industry Expo
www.figlobal.com/china/en/home.html

Overseas Participation - Processing & Packaging:

PROPAK PHILIPPINES
2026.2.4-6
Pasay, Philippines

PROPAK VIETNAM
2026.3.31-4.2
Ho Chi Ming City, Vietnam

PROPAK MENA
2026.6.2-4
Cairo, Egypt

PROPAK ASIA
2026.6.10-13
Bangkok, Thailand

PROPAK INDONESIA
2026.7.21-24
Jakarta, Indonesia

PROPAK HANOI
2026.10.13-15
Hanoi, Vietnam

Overseas Participation - Nutraceutical Products & Food Ingredients:

Vitafoods Europe
2026.5.5-7
Barcelona, Spain

Fi Vietnam
2026.5.13-15
Ho Chi Minh, Vietnam

Fi Africa
2026.6.2-4
Cairo, Egypt

Fi South America
2026.8.4-6
Sao Paulo, Brazil

Fi India
2026.8.26-28
Mumbai, India

Fi Asia Indonesia
2026.9.16-18
Jakarta, Indonesia

Vitafoods Middle East & Africa
2026.9.22-23
Dubai, UAE

SupplySide Global
2026.10.28-30
Las Vegas, USA

Fi Europe
2026.11.17-19
Frankfurt, Germany

Fi Asia Thailand
2027.9.1-3
Bangkok, Thailand

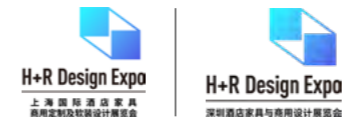
Furniture & Design



Maison Shanghai 2026
www.maison-shanghai.cn
2026.9.7-10 | SWEECC Shanghai



Furniture China 2026
www.furniture-china.cn
2026.9.8-11 | SNIEC Shanghai



Hospitality + Retail Design Expo
www.hrdesign.cn
Shanghai Edition: 2026.3.31-4.3 | SNIEC Shanghai
Shenzhen Edition: 2026.10.13-15 | Shenzhen World (Bao'an)



Fine Furniture & Deco Asia
dts.jagle.com/ffda
2026.7.21-24 | JIExpo, Indonesia



Connexion



Connexion Shenzhen

www.connexion.cn

2026.10.13-15 | Shenzhen World (Bao'an)

博华深圳联展
Connexion · Shenzhen
2026.10.13-15
Shenzhen World Exhibition & Convention Center

- Food Coffee & Tea
- Bakery Lighting Meal Desserts
- Hospitality Products Decorations & Design
- Furniture Design Decorative Materials
- Natural & Nutraceutical Products Health Ingredients
- Urban Lifestyle Gift / IP & Toy Market Foodie
- Food Processing & Packaging
- Catering Equipment
- Electronics Electrical Appliances
- Cleaning Sanitation Lighting

Concurrent Event:

HOTEL EX
Shenzhen
HOTEL EX Shenzhen 2026
www.hotelex.cn/shenzhen

HOTEL & SHOP PLUS
Shenzhen
Hotel & Shop Plus Shenzhen
www.expohsp.com/connexionshenzhen

H+R Design Expo
Hospitality + Retail Design Expo Shenzhen
www.hrdesign.cn/sz

CCE
CCE Shenzhen
www.chinacleanexpo.com/shenzhen

npe
Healthplex Expo
Natural & Nutraceutical Products Shenzhen 2026
www.hncexpo.com/en/sz

Hi Asia China | **Fi** Asia China
Hi & Fi Shenzhen
www.fia-china.com/shenzhen

PROPAK
SHENZHEN
PROPAK Shenzhen
www.propakchina.com/en/shenzhen

Urban Style
www.expolfestyle.com/sz

Sinoexpo's flame burns strong,
twenty-seven years long.
Sinoexpo's path shines bright,
guiding every morning light.

